



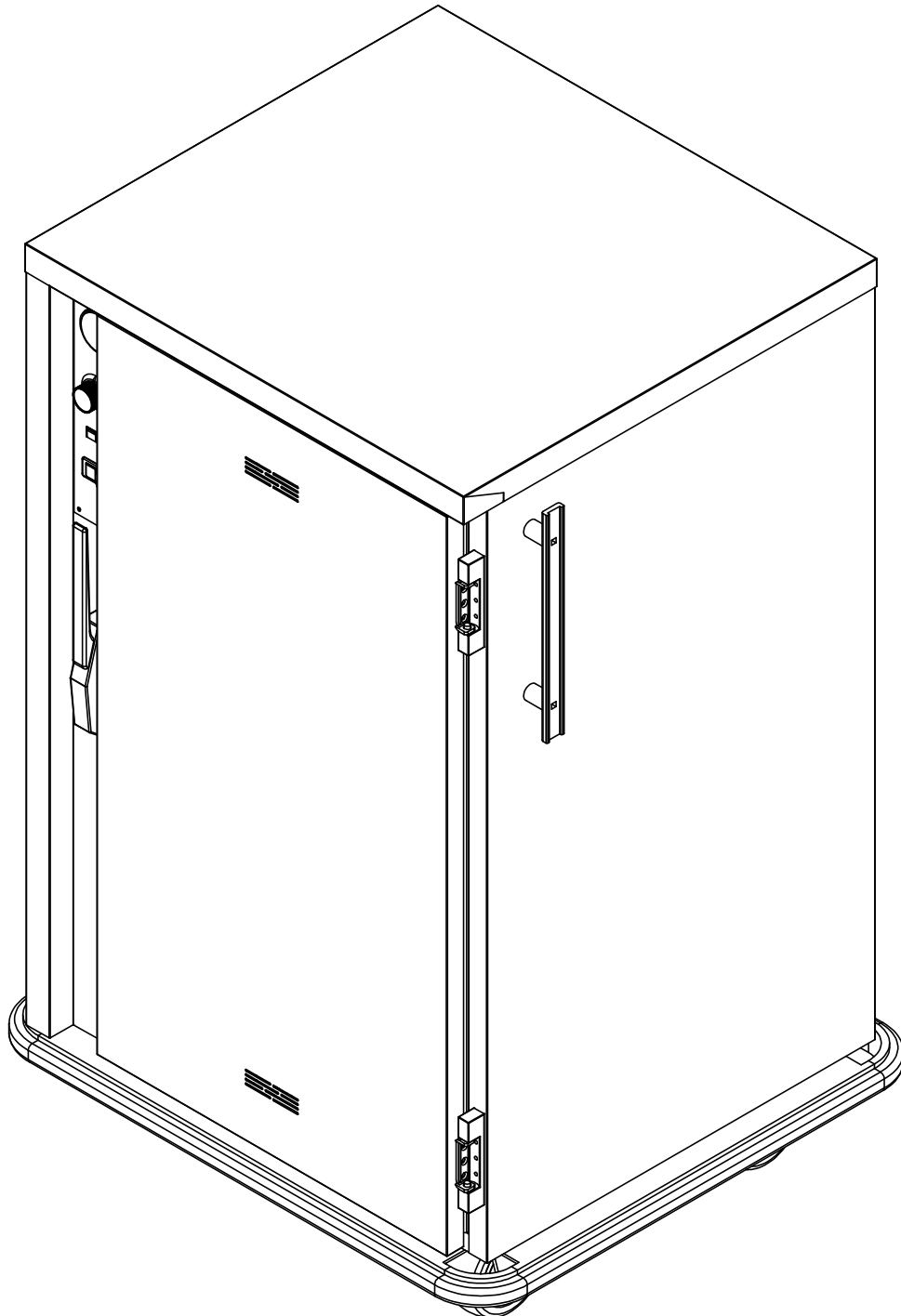
5599 Highway 31 West  
Portland, TN 37148  
(800) 722-4393

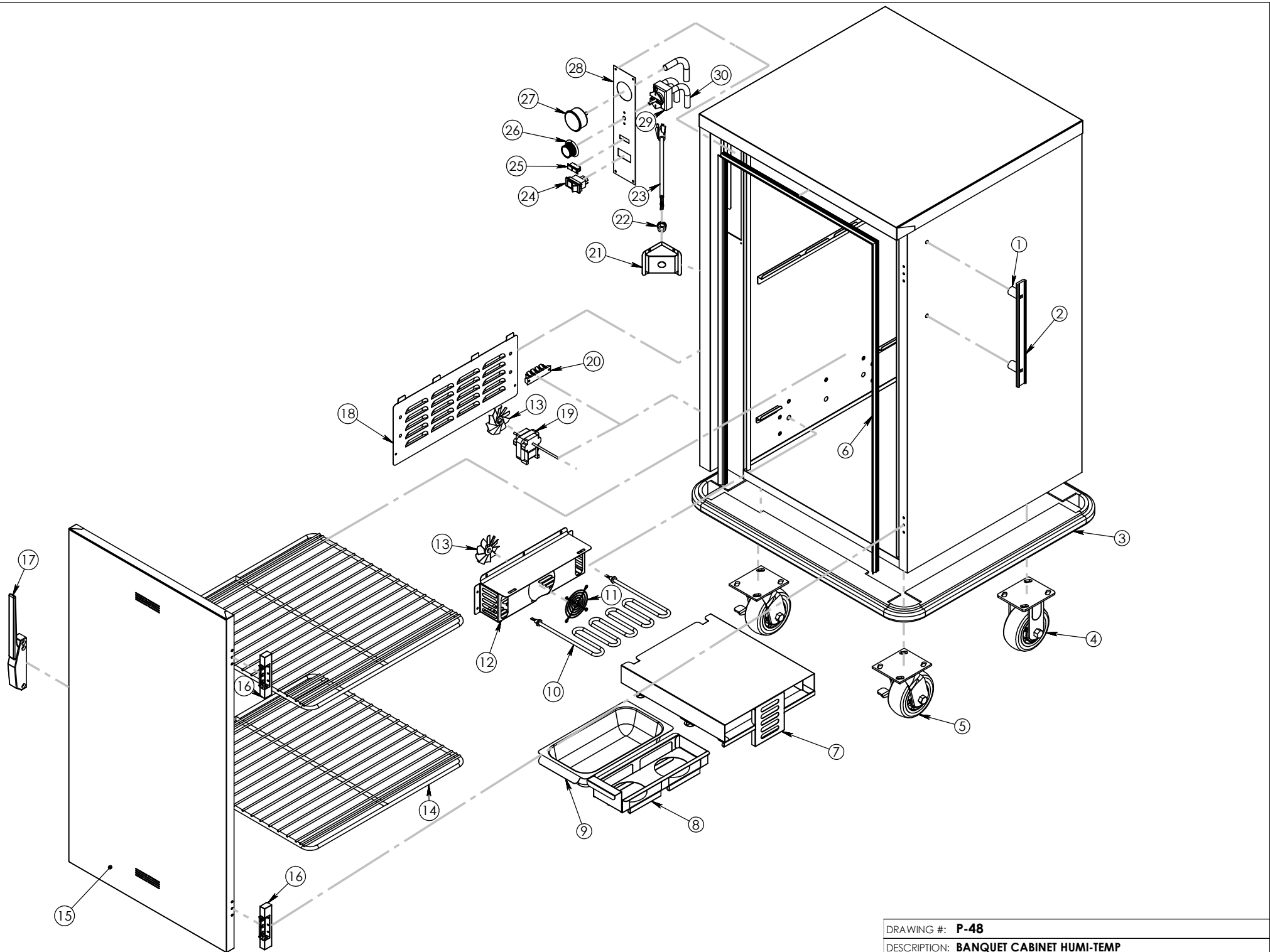
# P-48

Pg.1 . TITLE PAGE

Pg.3 . P-48 BOM

Pg.2 . P-48 EXPLODED





DRAWING #: <b>P-48</b>	
DESCRIPTION: <b>BANQUET CABINET HUMI-TEMP</b>	
DRAWN BY: DP	LAST SAVED BY: dplodzien

ITEM NO.	QTY.	PART NO.	DESCRIPTION
1	4	SPCR125X.330	HANDLE SPACERS FOR HDL 21 AND 12.
2	2	HDL-125-AL	HANDLE PUSH ALUMINUM 12.5" LONG
3	1	Z-200-1000	BUMPER P-48
4	2	CSTR 52-R-PPF	CASTER 5" RIGID EZ ROLL POLY
5	2	CSTR 52-SB-PPF	CASTER 5" SWIVEL BRAKE EZ ROLL POLY
6	1	GSKT-D-40-187X21-812	SILICONE DR GASKET D 40.187X21.812
7	1	Z-600-3572	HUMIT-TEMP STERNO HEATER
8	1	58379	STERNO DRAWER
9	1	WATER-PAN-3RD-WHDL	WATER PAN 2.5" X6.75 X
10	1	EL1250-120-HT	ELEMENT 1250 WATT 120 VOLT 8" HT
11	1	GRD FAN	FAN GUARD
12	1	4011	HUMITEMP BLOWER HOUSING
13	2	BLD FAN AL	FAN BLADE 3" ALUMINUM
14	2	SHLF-P60	SHELF WIRE 22.25"X21.75"
15	1	Z-301-4418 (INCLUDES 16&17)	P-48 DOOR ASSY EDG/EDG RH VENT
16	2	HNG-214	DOOR HINGE EDGEMOUNT .875"
17	1	LTH-DR	DOOR LATCH EDGEMOUNT STYLE CHROME
18	1	53454	HUMITEMP LOUVER PANEL W/TABS
19	1	MTR JK120 92	MOTOR DUAL SHAFTED 120 VOLT
20	1	TRM 4QC	TERMINAL BLOCK 4QC
21	1	69729	HUMI TRI-CORD BRCKET DD .672X .750
22	1	BSH STRN 3	STRAIN RELIEF FOR 15 AMP CORD
23	1	CRDSET10-115	CORD 12' 115V 5-15P 14GA 3WR 15AMP
24	1	SWH RCK E1	SWITCH NON-LT ROCKER 125/250V 20AMP
25	1	LT PLT A-G	INDICATOR LIGHT AMBER GREEN 125V
26	1	KNB H6	KNOB WITH ARROW
27	1	T-METER-100-400	2"DIAL T-MTR, 100/350 F/C
28	1	CNTRL-PNL-HUMI-TEMP-AL	ALUM PANEL FOR HUMI-TEMP
29	1	T-STAT H1	THERMOMSTAT HEAT CONTRL 90-190 36"
30	1	SLV-ACRYLIC-WHITE-7-16 @ 30"	SLEEVING ACRYLIC 7/16 ID WHITE FA1

DRAWING #: **P-48**

DESCRIPTION: **ASSEMBLY**

DRAWN BY: DP

LAST SAVED BY: dplodzien