

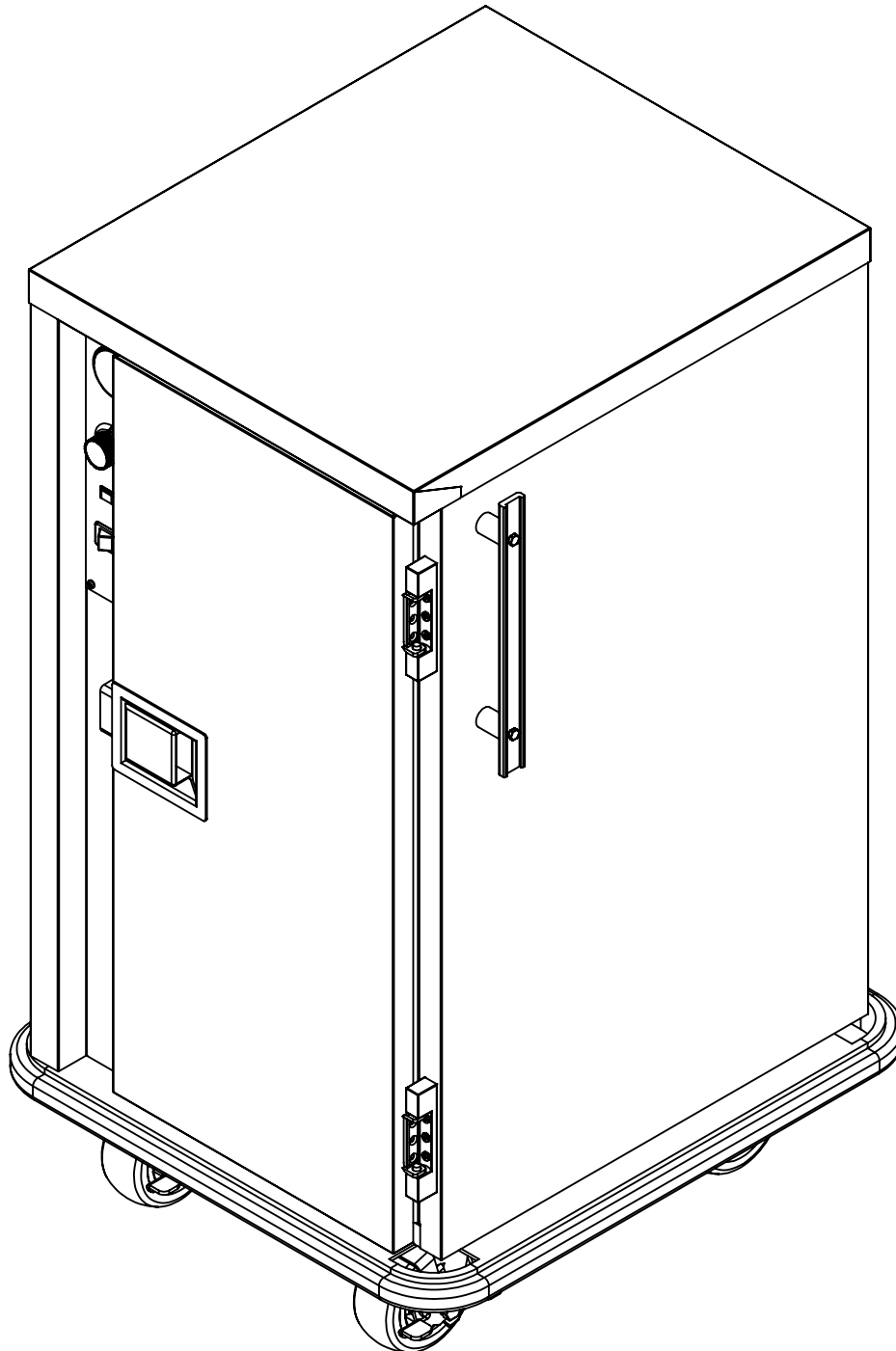


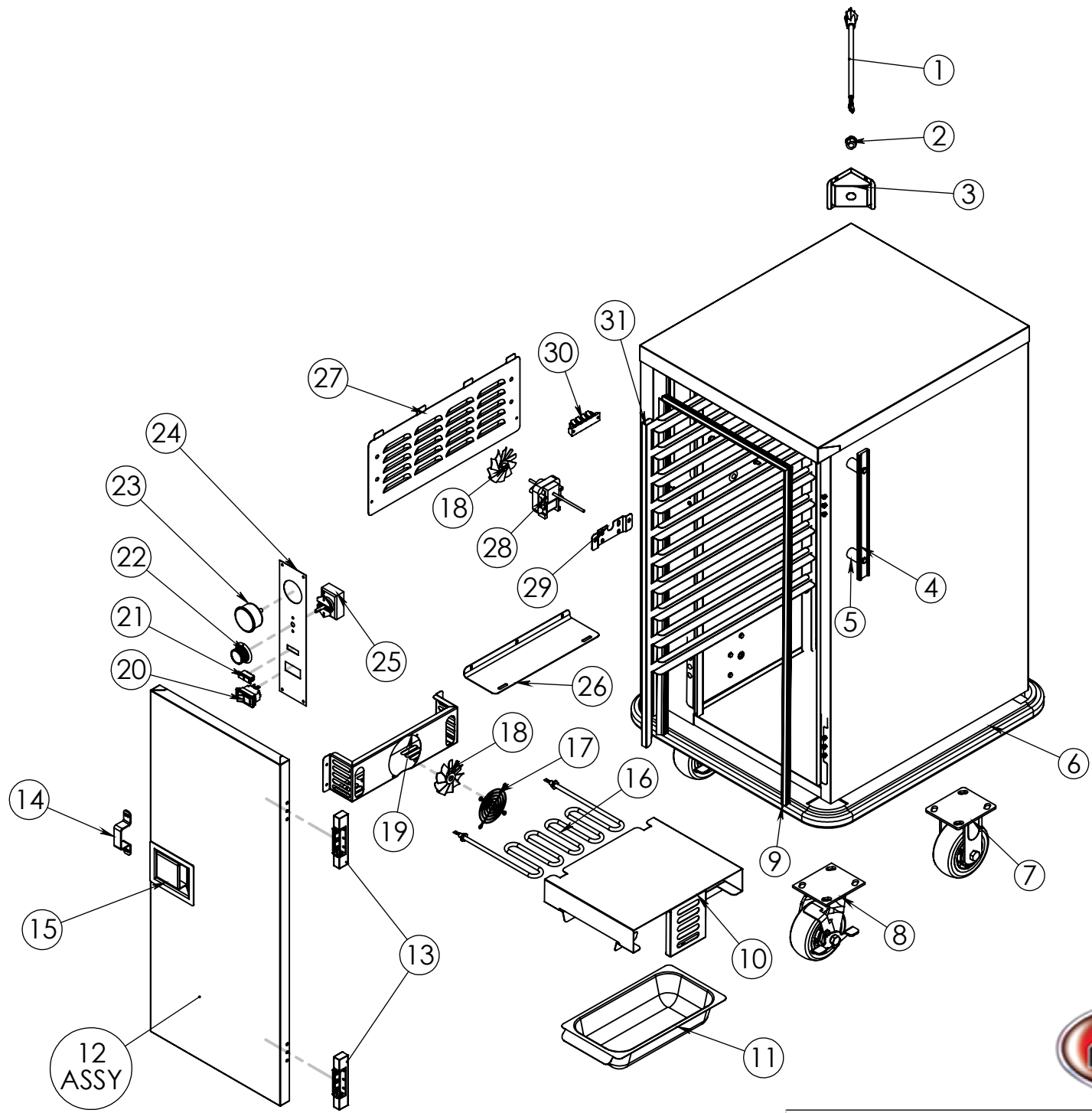
5599 Highway 31 West
Portland, TN 37148
(615)325-2774

PS-1220-10

Pg.1 . TITLE PAGE Pg.3 . PS-1220-10 BOM

Pg.2 . PS-1220-10





DRAWING #: PS-1220-10	
DESCRIPTION: PAN SERVER 12X20 SERIES	
DRAWN BY: DP	LAST SAVED BY: andrew82

ITEM NO.	QTY.	PART NO.	DESCRIPTION
1	1	CRDSET10-115	CORD 12' 115V 5-15P 14GA 3WR 15AMP
2	1	BSH STRN 3	STRAIN RELIEF FOR 15 AMP CORD
3	1	69729	HUMI TRI-CORD BRCKET DD .672X .750
4	2	HDL-125-AL	HANDLE PUSH ALUMINUM 12.5" LONG
5	2	SPCR125X.330	HANDLE SPACERS FOR HDL 21 AND 12.
6	1	Z-200-1058	PS-1220-10 15 BUMPER ASSEMBLY
7	2	CSTR 52-R-PPF	CASTER 5" RIGID EZ ROLL POLY
8	2	CSTR 52-SB-PPF	CASTER 5" SWIVEL BRAKE EZ ROLL POLY
9	1	GSKT-D-33-500X14-600	SILICONE DR GASKET D 33.500X14.600
10	1	67068	HUMITEMP TUNNEL 10.25
11	1	WATER-PAN-3RD-WHDL	WATER PAN 2.5" X6.75 X
12	1	Z-301-4049 (INCLUDE 13 , 14 , 15)	PS-1220-10 DOOR ASSEMBLY EDGE PDL
13	2	HNG-214	DOOR HINGE EDGEMOUNT .875"
14	1	66079	PADDLE LATCH STRIKE .75
15	1	LTH PDL-STD 50	DOOR LATCH PADDLE 4X5 1/2" STUDS
16	1	EL1250-120-HT	ELEMENT 1250 WATT 120 VOLT 8" HT
17	1	GRD FAN	FAN GUARD
18	2	BLD FAN AL	FAN BLADE 3" ALUMINUM
19	1	4011	HUMITEMP BLOWER HOUSING
20	1	SWH RCK E1	SWITCH NON-LT ROCKER 125/250V 20AMP
21	1	LT PLT A-G	INDICATOR LIGHT AMBER GREEN 125V
22	1	KNB H6	KNOB WITH ARROW
23	2	T-METER H1	THERMOMETER 100-220
24	1	CNTRL-PNL-HUMI-TEMP-AL	ALUM PANEL FOR HUMI-TEMP
25	1	T-STAT H1	THERMOMSTAT HEAT CONTRL 90-190 36"
26	1	4041	HUMITEMP BLOWER LID
27	1	53454	HUMITEMP LOUVER PANEL W/TABS
28	1	MTR BY120 92	MOTOR DUAL SHAFTED 120 VOLT
29	1	80610	BRACKET MOTOR MNT FOR BAY MTR
30	1	TRM 4QC	TERMINAL BLOCK 4QC
31	2	68136	PS-1220-10 GN PAN RACK 2.625" SP



DRAWING #: **PS-1220-10**

DESCRIPTION: **PAN SERVER 12X20 SERIES**

DRAWN BY: DP

LAST SAVED BY: dplodzien